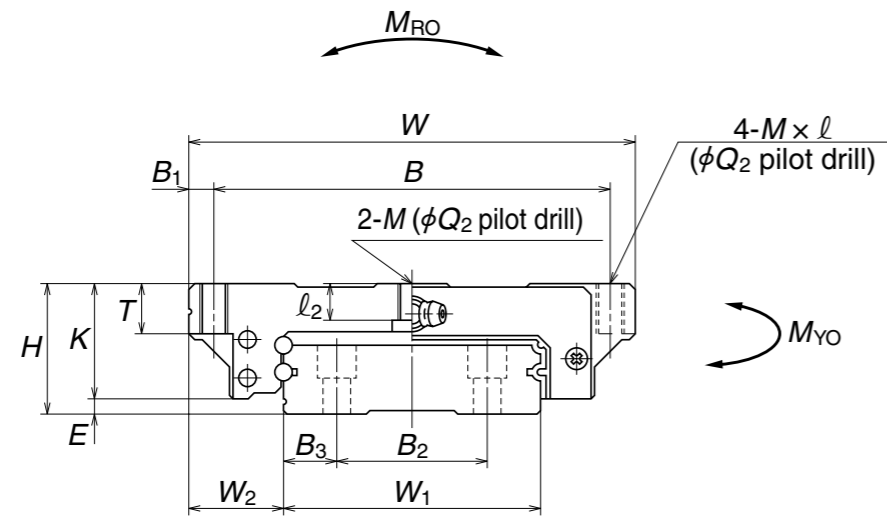
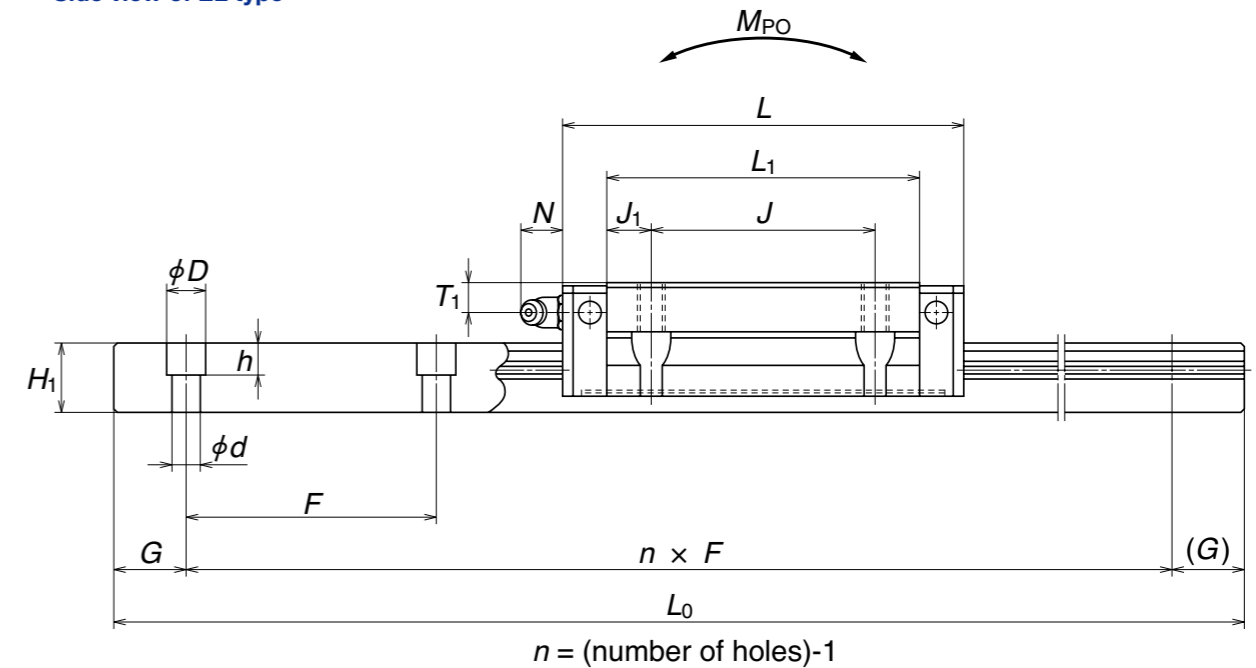


Ball Slide Model: EL

Front view of EL type



Side view of EL type



Unit: mm

| Model No. | Assembly | | | Ball slide | | | | | | | | | | | | | | Rail | | | | | | | Basic load rating | | | | | Ball diameter | | Weight | | |
|---------------|-------------|-----|----------------|------------|-------------|---------------|----|---------------|----------------|----------------|----------------|----------------|----------------|------|----|----------------|----------------|------|-----------------------|-------------------------|--------------------------|-------------------------|---------------------------------|-----------------------------------|--|------------------|------------------------------|-----------------------|-----------------------|---------------|----------------|-----------------|-------------|------|
| | Height H | E | W ₂ | Width W | Length L | Mounting hole | | | | | | | | | | Grease fitting | | | | Width W ₁ | Height H ₁ | Pitch B ₂ | Mounting bolt hole d × D × h | G (recommended) B ₃ | Max. length (Single rail) L _{0max} | Dynamic C (N) | Static C ₀ (N) | Static moment | | | D _w | Ball slide (kg) | Rail (kg/m) | |
| | | | | | | B | J | M × pitch × l | l ₂ | Q ₂ | B ₁ | L ₁ | J ₁ | K | T | Hole size | T ₁ | N | M _{R0} (N·m) | | | | | | | | | M _{P0} (N·m) | M _{Y0} (N·m) | | | | | |
| LW17EL | 17 | 2.5 | 13.5 | 60 | 51.4 | 53 | 26 | M4×0.7×6 | 3.2 | 3.3 | 3.5 | 35 | 4.5 | 14.5 | 6 | φ3 | 4 | 3 | 33 | 8.7 | 18 | 40 | 4.5×7.5×5.3 | 7.5 | 15 | 1 000 | 5 600 | 11 300 | 135 | 44 | 37 | 2.381 | 0.2 | 2.1 |
| LW21EL | 21 | 3 | 15.5 | 68 | 58.8 | 60 | 29 | M5×0.8×8 | 3.7 | 4.4 | 4 | 41 | 6 | 18 | 8 | M6×0.75 | 4.5 | 11 | 37 | 10.5 | 22 | 50 | 4.5×7.5×5.3 | 7.5 | 15 | 1 600 | 6 450 | 13 900 | 185 | 65.5 | 55 | 2.381 | 0.3 | 2.9 |
| LW27EL | 27 | 4 | 19 | 80 | 74 | 70 | 40 | M6×1×10 | 6 | 5.3 | 5 | 56 | 8 | 23 | 10 | M6×0.75 | 6 | 11 | 42 | 15 | 24 | 60 | 4.5×7.5×5.3 | 9 | 20 | 2 000 | 12 800 | 26 900 | 400 | 171 | 143 | 3.175 | 0.5 | 4.7 |
| LW35EL | 35 | 4 | 25.5 | 120 | 108 | 107 | 60 | M8×1.25×14 | 9 | 6.8 | 6.5 | 84 | 12 | 31 | 14 | M6×0.75 | 8 | 11 | 69 | 19 | 40 | 80 | 7×11×9 | 14.5 | 20 | 2 400 | 33 000 | 66 500 | 1 690 | 645 | 545 | 4.762 | 1.5 | 9.6 |
| LW50EL | 50 | 4.5 | 36 | 162 | 140.6 | 144 | 80 | M10×1.5×18 | 14 | 8.6 | 9 | 108 | 14 | 45.5 | 18 | Rc1/8 | 14 | 14 | 90 | 24 | 60 | 80 | 9×14×12 | 15 | 20 | 3 000 | 61 500 | 117 000 | 3 900 | 1 530 | 1 280 | 6.350 | 4.0 | 15.8 |

Note: Basic dynamic load rating C is a load that allows for a 50-km rating fatigue life and is a vertical and constant load on the ball slide mounting surface. To convert C to C₁₀₀ for a 100-km fatigue life, divide C by 1.26.

Part number for ball slide only

Example:

LAW 17 EL Z - K

Random-matching ball slide

Size

Shape/height

Accessories
K: With NSK K1
F: Fluoride low-temperature chrome plating + AS2 grease
F50: Fluoride low-temperature chrome plating + LG2 grease

Preload
Z: Slight preload (standard)

Part number for rail only

Example:

L1W 17 0950 L C N * PC Z**

Random-matching rail

Size

Rail length (mm)

Shape (L: Standard)

Material/surface treatment

*Butting rail specification
N: Non-butting L: Butting

Preload
Z: Slight preload (standard)

Accuracy: PC (only PC grade is available)

NSK control number (***) is required when making inquiries

Part number for assembly (ball slide + rail)

Example:

LW 35 1000 EL C 2 * PC Z**

Series

Size

Rail length (mm)

Shape/height

Material/surface treatment

Number of ball slides per rail

Preload Z: Slight preload (standard)

Accuracy: PC (only PC grade is available)
KC (with NSK K1)

NSK control number (***) is required when making inquiries