

# FLS – Flange, long, standard height R1653 ... 2.



**Dynamic characteristics**

Travel speed:  $v_{max} = 5 \text{ m/s}$   
 Acceleration:  $a_{max} = 500 \text{ m/s}^2$   
 (If  $F_{comb} > 2.8 \cdot F_{pr}$  :  $a_{max} = 50 \text{ m/s}^2$ )

**Note on lubrication**

► Pre-lubricated

**Note**

For all SNS/SNO ball guide rails.

**Options and part numbers**

Size	Ball runner block with size	Preload class				Accuracy class						Seal with ball runner blocks						
		C0	C1	C2	C3	N	H	P	XP	SP	UP	without ball chain			with ball chain			
												SS	LS <sup>1)</sup>	DS	SS	LS <sup>1)</sup>	DS	
15	R1653 1	9				4	3	-	-	-	-	20	21	-	22	23	-	-
			1			4	3	2	8	1	9	20	21	-	22	23	-	-
				2		-	3	2	8	1	9	20	21	-	22	23	-	-
					3	-	-	-	8	1	9	20	21	-	22	23	-	-
20	R1653 8	9				4	3	-	-	-	-	20	21	-	22	23	-	-
			1			4	3	2	8	1	9	20	21	2Z	22	23	2Y	-
				2		-	3	2	8	1	9	20	21	2Z	22	23	2Y	-
					3	-	-	-	8	1	9	20	21	2Z	22	23	2Y	-
25	R1653 2	9				4	3	-	-	-	-	20	21	-	22	23	-	-
			1			4	3	2	8	1	9	20	21	2Z	22	23	2Y	-
				2		-	3	2	8	1	9	20	21	2Z	22	23	2Y	-
					3	-	-	-	8	1	9	20	21	2Z	22	23	2Y	-
30	R1653 7	9				4	3	-	-	-	-	20	21	-	22	23	-	-
			1			4	3	2	8	1	9	20	21	2Z	22	23	2Y	-
				2		-	3	2	8	1	9	20	21	2Z	22	23	2Y	-
					3	-	-	-	8	1	9	20	21	2Z	22	23	2Y	-
35	R1653 3	9				4	3	-	-	-	-	20	21	-	22	23	-	-
			1			4	3	2	8	1	9	20	21	2Z	22	23	2Y	-
				2		-	3	2	8	1	9	20	21	2Z	22	23	2Y	-
					3	-	-	-	8	1	9	20	21	2Z	22	23	2Y	-
45	R1653 4	9				4	3	-	-	-	-	20	-	-	22	-	-	-
			1			4	3	2	8	1	9	20	-	2Z	22	-	2Y	-
				2		-	3	2	8	1	9	20	-	2Z	22	-	2Y	-
					3	-	-	-	8	1	9	20	-	2Z	22	-	2Y	-
<b>e.g.</b>	R1653 7		1				3								20			

1) With accuracy classes N and H and XP in preload class C1 only.

**Order example**

Options:

- FLS ball runner block
- Size 30
- Preload class C1
- Accuracy class H
- With standard seal, without ball chain

Part number:  
R1653 713 20

**Preload classes**

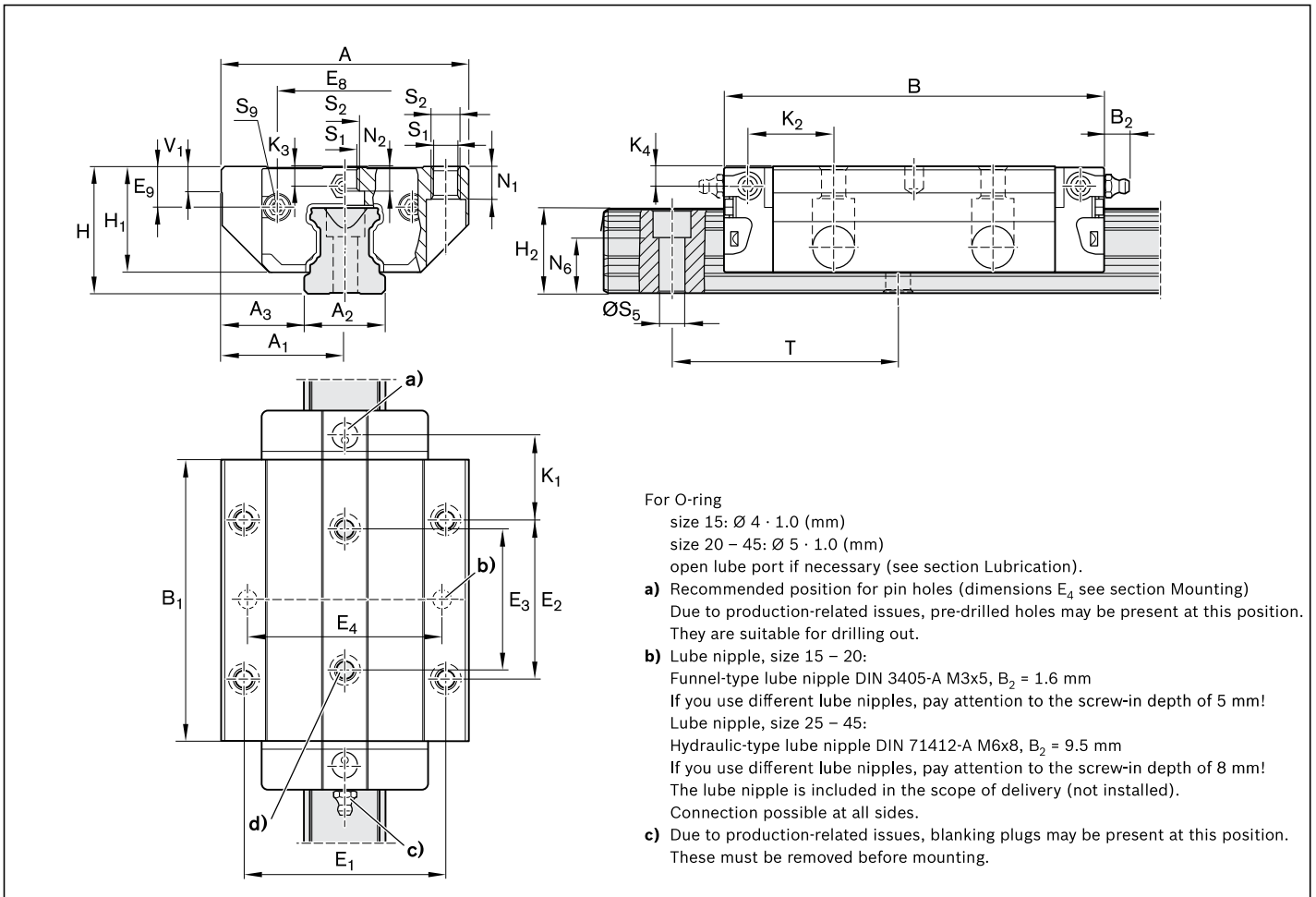
C0 = Without preload (clearance)  
 C1 = Moderate preload  
 C2 = Average preload  
 C3 = High preload

**Seals**

SS = standard seal  
 LS = low-friction seal  
 DS = double-lipped seal

**Key**

Gray digits = No preferred variant/combination (Some delivery times may be longer)



Size	Dimensions (mm)																		
	A	A <sub>1</sub>	A <sub>2</sub>	A <sub>3</sub>	B <sup>+0.5</sup>	B <sub>1</sub>	E <sub>1</sub>	E <sub>2</sub>	E <sub>3</sub>	E <sub>8</sub>	E <sub>9</sub>	H	H <sub>1</sub>	H <sub>2</sub> <sup>1)</sup>	H <sub>2</sub> <sup>2)</sup>	K <sub>1</sub>	K <sub>2</sub>	K <sub>3</sub>	K <sub>4</sub>
15	47	23.5	15	16.0	72.6	53.6	38	30	26	24.55	6.70	24	19.90	16.30	16.20	15.20	16.80	3.20	3.20
20	63	31.5	20	21.5	91.0	65.6	53	40	35	32.50	7.30	30	25.35	20.75	20.55	19.80	19.80	3.35	3.35
25	70	35.0	23	23.5	107.9	79.5	57	45	40	38.30	11.50	36	29.90	24.45	24.25	23.30	24.45	5.50	5.50
30	90	45.0	28	31.0	119.7	89.4	72	52	44	48.40	14.60	42	35.35	28.55	28.35	25.00	26.70	6.05	6.05
35	100	50.0	34	33.0	139.0	105.5	82	62	52	58.00	17.35	48	40.40	32.15	31.85	28.75	30.25	6.90	6.90
45	120	60.0	45	37.5	174.1	133.5	100	80	60	69.80	20.90	60	50.30	40.15	39.85	35.50	37.50	8.20	8.20

Size	Dimensions (mm)										Weight (kg)	Load capacities <sup>3)</sup> (N)		Load moments <sup>3)</sup> (Nm)			
	N <sub>1</sub>	N <sub>2</sub>	N <sub>6</sub> <sup>+0.5</sup>	S <sub>1</sub>	S <sub>2</sub>	S <sub>5</sub>	S <sub>9</sub>	T	V <sub>1</sub>	m		C	C <sub>0</sub>	M <sub>t</sub>	M <sub>t0</sub>	M <sub>L</sub>	M <sub>L0</sub>
15	5.2	4.40	10.3	4.3	M5	4.5	M2.5x3.5	60	5.0	0.30	12 800	18 400	120	180	120	180	
20	7.7	5.20	13.2	5.3	M6	6.0	M3x5	60	6.0	0.55	29 600	41 800	380	540	340	490	
25	9.3	7.00	15.2	6.7	M8	7.0	M3x5	60	7.5	0.90	37 300	52 500	530	750	530	740	
30	11.0	7.90	17.0	8.5	M10	9.0	M3x5	80	7.0	1.50	46 000	66 900	800	1 160	740	1 080	
35	12.0	10.15	20.5	8.5	M10	9.0	M3x5	80	8.0	2.25	66 700	116 000	1 440	2 500	1 290	2 240	
45	15.0	12.40	23.5	10.4	M12	14.0	M4x7	105	10.0	4.30	111 000	190 000	3 010	5 120	2 730	4 660	

- 1) Dimension H<sub>2</sub> with cover strip
  - 2) Dimension H<sub>2</sub> without cover strip
  - 3) Load capacities and load moments for ball runner blocks **without** ball chain. Load capacities and load moments for ball runner blocks **with** ball chain 12
- Determination of the dynamic load capacities and load moments is based on a 100,000 m travel life according to DIN ISO14728-1. Often only 50,000 m are actually stipulated. For comparison: Multiply values **C**, **M<sub>t</sub>** and **M<sub>L</sub>** by 1.26 according to the table.

## FLS – Flange long standard height, R1653 ... 1.



### Dynamic characteristics

Travel speed:  $v_{\max} = 3 \text{ m/s}$

Acceleration:  $a_{\max} = 250 \text{ m/s}^2$

(If  $F_{\text{comb}} > 2.8 \cdot F_{\text{pr}}$ :  $a_{\max} = 50 \text{ m/s}^2$ )

### Note on lubrication

- ▶ Not pre-lubricated

### Note

Can be used on all ball guide rails SNS.

### Options and part numbers

Size	Ball runner block with size	Preload class				Accuracy class					Seal with ball runner blocks without ball chain
		C0	C1	C2	C3	N	H	P	SP	UP	
55	R1653 5	9				4	3	–	–	–	10
			1			4	3	2	1	9	10
				2		–	3	2	1	9	10
					3	–	–	2	1	9	10
65	R1653 6	9				4	3	–	–	–	10
			1			4	3	2	1	9	10
				2		–	3	2	1	9	10
					3	–	–	2	1	9	10
e.g.	R1653 5		1				3				10

### Order example

Options:

- ▶ FLS ball runner block
- ▶ Size 55
- ▶ Preload class C1
- ▶ Accuracy class H
- ▶ With standard seal, without ball chain

Part number:

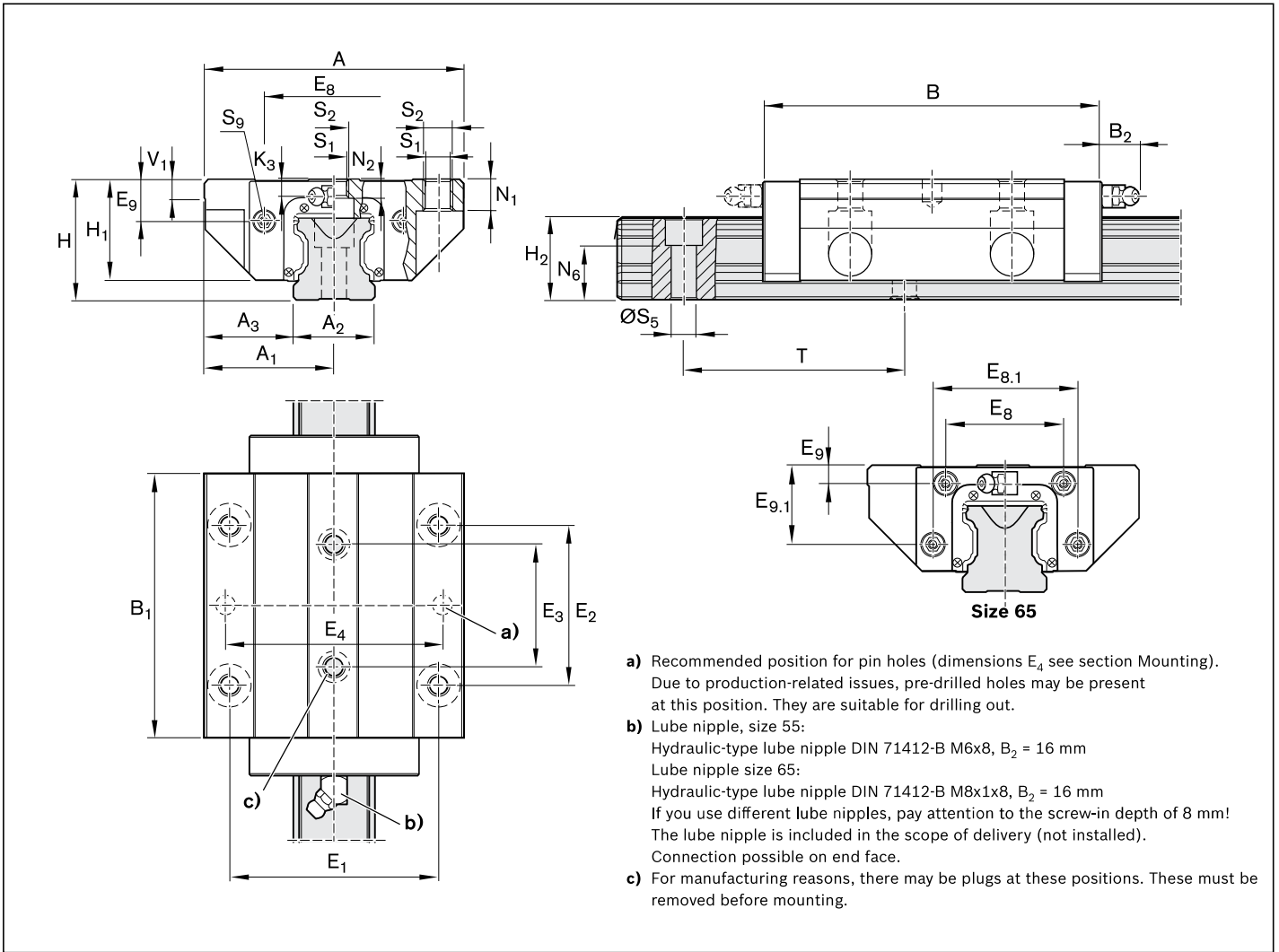
R1653 513 10

### Preload classes

C0 = Without preload (clearance)  
 C1 = Moderate preload  
 C2 = Average preload  
 C3 = High preload

### Seals

SS = standard seal



Size	Dimensions (mm)																
	A	A <sub>1</sub>	A <sub>2</sub>	A <sub>3</sub>	B <sup>+0.5</sup>	B <sub>1</sub>	E <sub>1</sub>	E <sub>2</sub>	E <sub>3</sub>	E <sub>8</sub>	E <sub>8.1</sub>	E <sub>9</sub>	E <sub>9.1</sub>	H	H <sub>1</sub>	H <sub>2</sub> <sup>1)</sup>	H <sub>2</sub> <sup>2)</sup>
55	140	70	53	43.5	199	155.5	116	95	70	80	-	22.3	-	70	57	48.15	47.85
65	170	85	63	53.5	243	194.6	142	110	82	76	100	11.0	53.5	90	76	60.15	59.85

Size	Dimensions (mm)											Weight (kg)	Load capacities <sup>3)</sup> (N)		Load moments <sup>3)</sup> (Nm)			
	K <sub>3</sub>	N <sub>1</sub>	N <sub>2</sub>	N <sub>6</sub> <sup>+0.5</sup>	S <sub>1</sub>	S <sub>2</sub>	S <sub>5</sub>	S <sub>9</sub>	T	V <sub>1</sub>	m		C	C <sub>0</sub>	M <sub>t</sub>	M <sub>t0</sub>	M <sub>L</sub>	M <sub>L0</sub>
55	9	18	13.5	29.0	12.4	M14	16	M5x8	120	12	7.50	139 000	245 000	4 410	7 780	3 960	6 990	
65	16	23	14.0	38.5	14.6	M16	18	M4x7	150	15	14.15	223 000	404 000	8 810	16 000	8 160	14 800	

- 1) Dimension  $H_2$  with cover strip
- 2) Dimension  $H_2$  without cover strip
- 3) Load capacities and load moments for ball runner blocks **without** ball chain.  
Determination of the dynamic load capacities and load moments is based on a 100,000 m travel life according to DIN ISO14728-1. Often only 50,000 m are actually stipulated. For comparison: Multiply values **C**, **M<sub>t</sub>** and **M<sub>L</sub>** by 1.26 according to the table.