

SNH – Slimline, normal, high

R1821 ... 2.



Dynamic characteristics

Travel speed: $v_{\max} = 4 \text{ m/s}$

Acceleration: $a_{\max} = 150 \text{ m/s}^2$

Recommended combination based on preload and accuracy class

- ▶ For preload C2: H and P (preferably)
- ▶ For preload C3: P and SP

Material numbers

Size	Roller Runner Block with size	Preload class		Accuracy class				Seals		
		C2	C3	H	P	SP	UP	DS	SS ¹⁾	AS
25	R1821 2	2		3	2	1	9	2X	–	–
			3		2	1	9	2X	–	–
35	R1821 3	2		3	2	1	9	2X	24	2A
			3		2	1	9	2X	24	2A
45	R1821 4	2		3	2	1	9	2X	24	2A
			3		2	1	9	2X	24	2A
55	R1821 5	2		3	2	1	9	2X	–	2A
			3		2	1	9	2X	–	2A

1) In Preparation

Technical data

Size	Mass (kg)	Load ratings ²⁾ (N)		Torsional moment load capacity ²⁾ (Nm)		Longitudinal moment load capacity ²⁾ (Nm)	
		C	C ₀	M _t	M _{t0}	M _L	M _{L0}
25	0.63	26900	59500	348	770	260	580
35	1.85	61000	119400	1210	2370	760	1480
45	3.35	106600	209400	2640	5180	1650	3,240
55	5.04	140400	284700	4120	8350	2610	5290

2) Determination of the dynamic load capacities and load moments is based on a stroke travel of 100,000 m according to DIN ISO 14728-1. However, often only 50,000 m is actually stipulated. For comparison: Multiply values C, M_t and M_L from the table by 1.23.

Order example

Options:

- ▶ Roller Runner Block SNH
- ▶ Size 35
- ▶ Preload class C2
- ▶ Accuracy class H
- ▶ With double-lip seal 2X

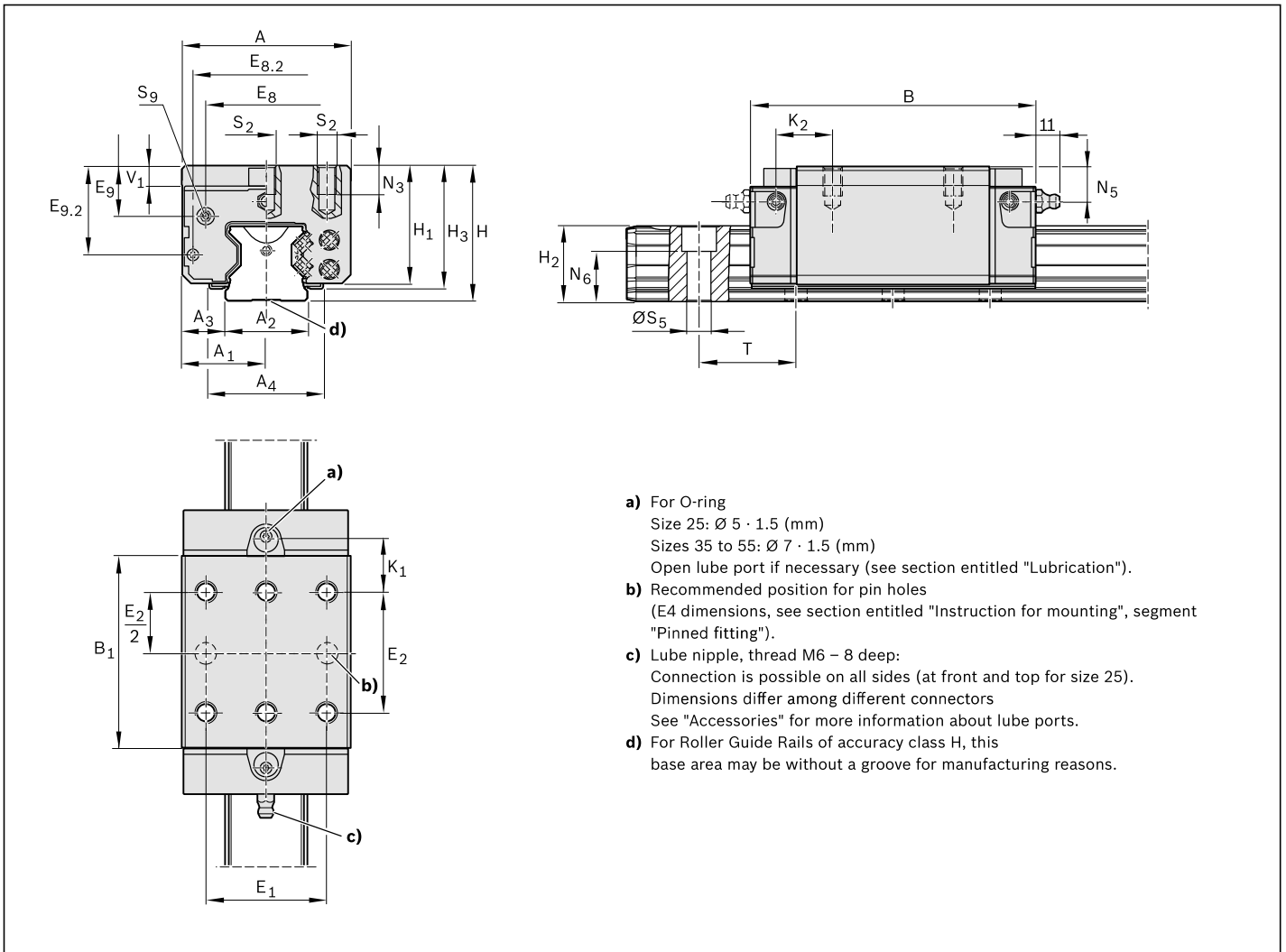
Material number: R1821 323 2X

Preload classes

C2 = Average preload
 C3 = High preload
 C1, C4, C5 upon request

Seals

DS = Double-lip seal
 SS = Standard seal
 AS = Longitudinal seal



Dimensions (mm)

Size	A	A ₁	A ₂	A ₃	A ₄ ¹⁾	B	B ₁	E ₁	E ₂	E ₈	E _{8.2}	E ₉	E _{9.2}
25	48	24	23	12.5	–	97.00	63.5	35	35	33.4	40.2	12.30	25.40
35	70	35	34	18.0	47.0	118.00	79.6	50	50	50.3	60.5	20.10	36.10
45	86	43	45	20.5	55.6	147.00	101.5	60	60	62.9	72.0	26.70	46.50
55	100	50	53	23.5	63.3	170.65	123.1	75	75	74.2	81.6	28.85	50.75

Size	H	H ₁	H ₂ ²⁾	H ₂ ³⁾	H ₃ ⁴⁾	K ₁	K ₂	N ₃	N ₅	N ₆ ^{±0.5}	S ₂	S ₅	S ₉ ⁵⁾	T ⁶⁾	V ₁
25	40	34	23.60	23.40	–	19.05	–	8	–	14.3	M6	7	M3-6,5 deep	30.0	7.5
35	55	48	31.10	30.80	50	21.55	23.40	13	14.0	19.4	M8	9	M3-6,0 deep	40.0	8.0
45	70	61	39.10	38.80	63	27.45	30.35	18	18.0	22.4	M10	14	M4-9,0 deep	52.5	10.0
55	80	68	47.85	47.55	70	31.75	34.90	19	19.0	28.7	M12	16	M5-8.0 deep	60.0	12.0

- 1) Dimension A₄ = Width of the additional longitudinal seal
- 2) Dimension H₂ with cover strip
- 3) Dimension H₂ without cover strip
- 4) Dimension H₃ = Total Roller Runner Block including the additional longitudinal seal
- 5) Thread for connecting parts
- 6) T = Rail separation of the Roller Guide Rail