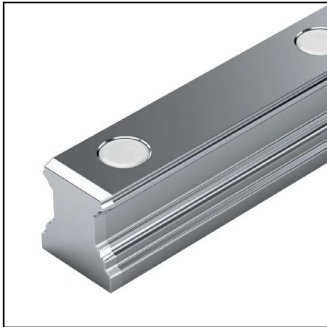


Ball guide rails, Resist NR II

R2045 .0. ..., SNS for mounting from above with plastic caps



Options and part numbers

Size	Ball guide rail with size	Accuracy class			Number of sections, rail length L (mm),	
		N	H	P	One-piece	Composite
15 ¹⁾	R2045 10	4	3	2	31,	3.,
20	R2045 80	4	3	2	31,	3.,
25	R2045 20	4	3	2	31,	3.,
30	R2045 70	4	3	2	31,	3.,
35	R2045 30	4	3	2	31,	3.,
e.g.	R2045 70	3			31, 1676	

1) Maximum rail length 1856 mm, maximum number of holes n_B 30

Installation information

- ▶ Plastic mounting hole plugs included in scope of supply.
- ▶ Composite guide rails also available.

Ordering example 1 (to L_{max})

Options:

- ▶ NR II, SNS ball guide rail
- ▶ Size 30
- ▶ Accuracy class H
- ▶ One-piece
- ▶ Rail length
L = 1676 mm

Part number:

R2045 703 31, 1676 mm

Ordering example 2 (above L_{max})

Options:

- ▶ NR II, SNS ball guide rail
- ▶ Size 30
- ▶ Accuracy class H
- ▶ **2 sections**
- ▶ Rail length
L = 5116 mm

Part number:

R2045 703 **32**, 5116 mm

R2047 .0. ..., SNS for mounting from below



Options and part numbers

Size	Ball guide rail with size	Accuracy class			Number of sections, rail length L (mm),	
		N	H	P	One-piece	Composite
15 ¹⁾	R2047 10	4	3	2	31,	3.,
20	R2047 80	4	3	2	31,	3.,
25	R2047 20	4	3	2	31,	3.,
30	R2047 70	4	3	2	31,	3.,
35	R2047 30	4	3	2	31,	3.,
e.g.	R2047 70	3			32, 5116	

1) Maximum rail length 1856 mm, maximum number of holes n_B 30

Installation information

- ▶ Composite guide rails also available.

Ordering example 1 (to L_{max})

Options:

- ▶ NR II, SNS ball guide rail
- ▶ Size 30
- ▶ Accuracy class H
- ▶ One-piece
- ▶ Rail length
L = 1676 mm

Part number:

R2047 703 31, 1676 mm

Ordering example 2 (above L_{max})

Options:

- ▶ NR II, SNS ball guide rail
- ▶ Size 30
- ▶ Accuracy class H
- ▶ **2 sections**
- ▶ Rail length
L = 5116 mm

Part number:

R2047 703 **32**, 5116 mm